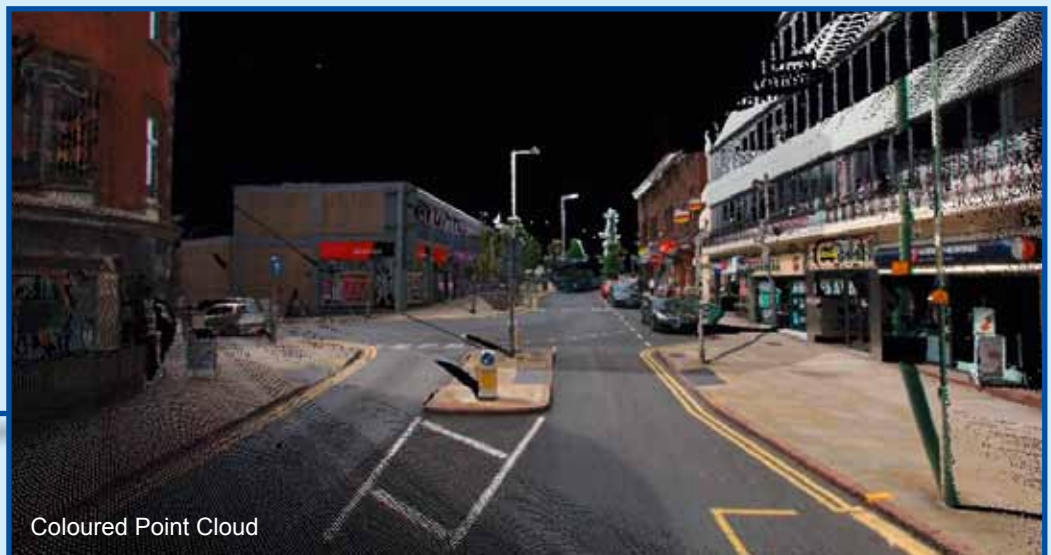


StreetMapper 360



The world's most accurate mobile laser mapping system with 360-degree vision

StreetMapper 360 is designed for the rapid mapping of highways, infrastructure and buildings. Using the very latest laser scanning technology, precision navigation and advanced data processing coupled with innovative system design, *StreetMapper 360* delivers proven accuracies in the most challenging environments.



Coloured Point Cloud



Precision Navigation

The onboard navigation system includes a high end GPS / GLONASS receiver, a fibre optic gyro based Inertial Measurement Unit (IMU) and the latest Direct Inertial Aiding (DIA) system to assist in areas of poor GNSS reception. *StreetMapper* is the only system on the market to offer this level of precision navigation.

Multi Sensor Mapping

StreetMapper 360 offers a 360-degree field of view, a range of 300 m and an effective measuring rate of 300 kHz per sensor, delivering high precision performance and coverage. The scanners combine new, higher performance sensors with inertial waveform processing to record unlimited returns per laser pulse and complete digital processing. An integrated high resolution digital camera can be used to capture either still or video images.

Innovative Design

An innovative lifting sensor platform has significantly improved the protection of both equipment and personnel during installation, use and routine maintenance. The scanner are protected from the elements during operation, can be removed from sight when not in use in addition there is no requirement for personnel to work at height. A modular system, *StreetMapper 360* has been proven in environments ranging from the Artic Circle to Singapore.

StreetMapper is the result of a joint venture between guidance and navigation specialist IGI mbH and 3D Laser Mapping Ltd.



Coloured Point cloud

More info
in the web



3D Laser Mapping Ltd.

Unit 1 Moorbridge Court,
Moorbridge Road East, Bingham
Nottingham, NG13 8GG, UK
P: +44 (0) 1949 838 004
F: +44 (0) 870 121 4605
E: info@3dlasermapping.com
W: www.3dlasermapping.com

IGI mbH

Langenauer Str. 46
57223 Kreuztal
Germany
P: +49 (0) 2732 5525-0
F: +49 (0) 2732 5525-25
E: info@igi-systems.com
W: www.igi-systems.com