



DAT/EM Systems International
8240 Sandlewood Place, Suite 101
Anchorage, Alaska USA 99507
Phone (907) 522-3681
Support Department Email: support@datem.com
Web: www.datem.com

The following changes have been made to DAT/EM products between Release 6.5 and Release 6.6. Please review these revisions made to the software and update your software to implement changes.

As always, DAT/EM welcomes comments and suggestions from you, our clients, so please don't hesitate to contact our support department at support@datem.com, or by calling in or faxing us with your requests.

Operating Systems

Release 6.6 is supported on Windows XP Professional and Windows 7 Ultimate or Professional operating systems. Testing no longer occurs for Windows 2000 or VISTA Ultimate. If you have a question, please contact Support.

Hardware Locks/Dongles

Please install Microsoft Updates and Service Packs for your operating system before applying lock reset programs. Network licensing should have the same Sentinel driver version on both the server and the local computers running the software.

DAT/EM Capture and MapEditor for MicroStation

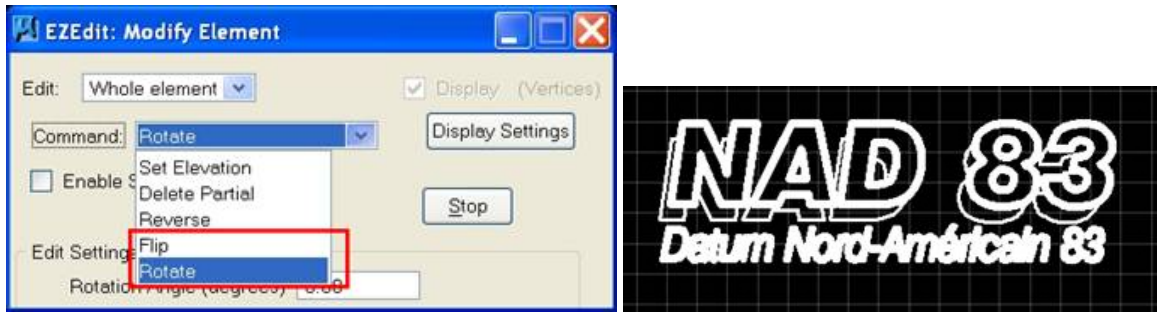
Changes apply to Capture for MicroStation V8/2004 Edition, MicroStation XM, and MicroStation V8i Series 1 or 2 on 32-bit and 64-bit operating systems. Note:

- **MicroStation V8 and V8 2004 Edition: Version should be 08.05.00.34 or higher.**
- **MicroStation XM and V8i Series 1: XM version should be 08.09.04.88 or higher.**
- **MicroStation V8i, V8i-based Bentley Map and Map Enterprise Select Series 1 and 2: Select Series 2 is recommended over Series 1.**
 - If you upgrade from Select Series 1 to 2, you must reinstall DAT/EM software after installing Select Series 2.
 - **DO NOT USE SELECT SERIES 3:** DAT/EM software does not install for Select Series 3. Development for this version is ongoing.

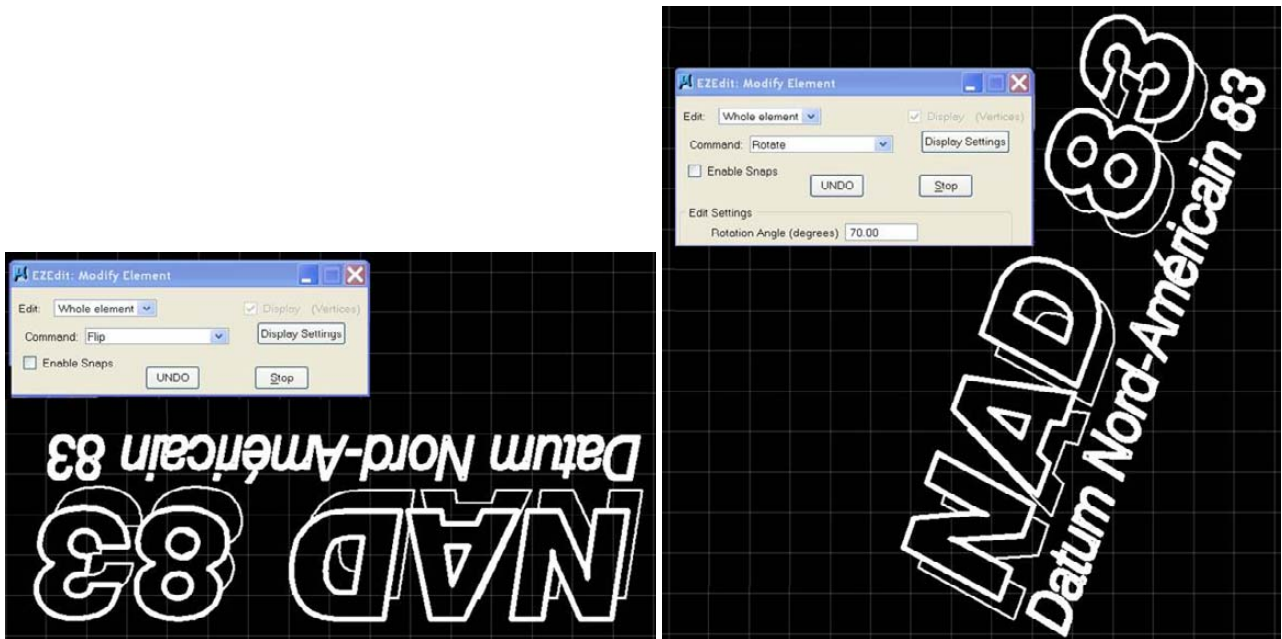
The following changes were made to DAT/EM Capture and MapEditor for MicroStation:

1. CLIP's exterior mode in MicroStation V8i SS2 now handles shared cells correctly.
2. ELEVATE (Drape) can now use points as input.

3. EZEDIT has two new **Whole Element** options: **Flip** rotates the selected object 180 degrees around its center. **Rotate** rotates the selected object to the set number of degrees.



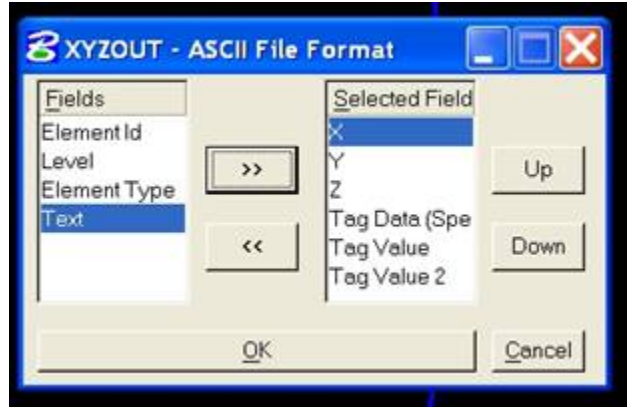
EZEDIT with a cell to rotate



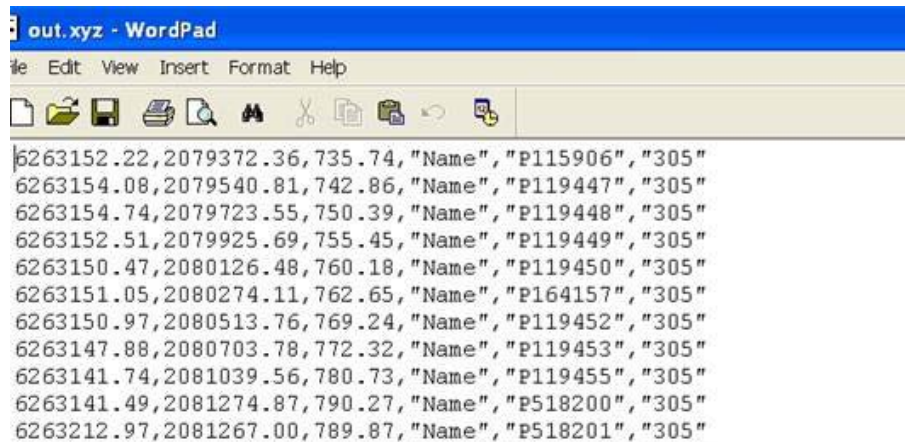
After EZEDIT > Whole Element > Flip and Rotate

4. The ZLABEL family of commands has the following changes:
- ZLABEL's router dialog now closes automatically after an option is selected from it.
 - ZLABEL GUIDERS now always aligns the text upright in the direction of the guider, but at the same time aligned to the polyline it is labeling. Please draw all guiders in the direction of upright text.
 - The ZLABEL SETTINGS dialog's "Align Text Labels to Guider" has changed to "Align to labeled object".
 - ZLABEL PICK now activates a two-pick placement option. The first pick is the center of the text and the second pick defines the text angle. This allows the user to decide the final text angle in places where "most north" or aligned to the polyline doesn't give the desired angle.

- XYZOUT can now export tag values. The existing **Tag Data** field has been renamed **Tag Data (Spec)** [specification] to clarify that it is the tag data specification name, not the value in the tag. The new fields are called **Tag Value** and **Tag Value 2**. **Tag Value** will always return the value of the element's first tag. **Tag Value 2** will always return the value of the element's last tag. Tag field data types of *Double*, *Char*, and *Long* are supported.



XYZOUT's renamed **Tag Data (Spec)** field and the new **Tag Value** and **Tag Value 2** fields



Example of XYZOUT results with **Tag Data (Spec)**, **Tag Value**, and **Tag Value 2** fields

- In the Parameter File Editor, the Pattern Settings dialog now starts correctly when **Unpattern (pattern)** is selected.
- The "Pick Classes" list previously allowed duplicate class specifications. It now filters out duplicates from the list.
- The PSQR Object dialog is activated by adding **PSQR** to a parameter file or by selecting **PSQR Object** from the MapEditor "Run Single Commands" menu. This dialog's **2D** setting previously had no effect. This has been fixed so that 2D on and off have the originally intended effects:
 - If **2D** is checked on, each vertex in the building element will be set to the elevation of the first digitized vertex.
 - If **2D** is off, each vertex in the building will retain its current elevation as long as the elevation has changed more than **Z Tol**(erance) from the elevation of the previous vertex.

9. PSQR OBJECT and MEPSQR have the following items fixed or changed:
- They could sometimes unsquare an element that already had square (90 degree) corners. This has been fixed so that it will pass an already squared element through without changes.
 - PSQR ELM and PSQR OBJECT did not handle duplicate points correctly. They now eliminate duplicate points correctly from the final result.
 - PSQR OBJECT was losing the last vertex on snapped and closed elements when the closed button was unchecked. This has been fixed.
 - For open, unsnapped objects, PSQR OBJ and PSQR ELM were adding an extra vertex that was far from the object. In addition, PSQR ELM was attempting to join the start and end vertices, which moved both vertices far from the object.
 - PSQR OBJECT was using the shape checkbox as the only criteria for whether the new element was a shape. For example, shapes would be converted to line strings by PQSR if the box was not checked. Now, if the box is checked, all elements are converted to shapes. If it is not checked, the element preserves its type (shapes remain shapes, unclosed elements remain unclosed). This is consistent with the way PSQR ELM preserves element type.

Note: the PSQR tolerance can be adjusted (down) to avoid squaring stroked arcs. Because there was a work around in the current infrastructure, no modifications were made in this area.

10. DAT/EM Contour Creator can trigger a MicroStation crash when writing contours directly into MicroStation V8i Select Series 2 and 3. This problem is in DAT/EM Capture for MicroStation, not Contour Creator. This problem was identified too late to be completely fixed for version 6.6. If you experience this problem, please contact DAT/EM Support and ask to be notified when it is fixed.
11. **BETA VERSION: Volume** and **Volume Text Settings** are two new commands in the Parameter File Editor command list. These are beta versions. If desired, try this command and give DAT/EM feedback on operation and requests. Prepare files or objects that define the base ground level. To calculate the areas of multiple distinct areas (such as multiple gravel piles), place each area's elevation-defining objects on unique levels/attributes. First add the **Volume Text Settings** command to the parameter file. Next add one or more **Volume** commands. The text settings line should always appear before any volume lines in the parameter file.

