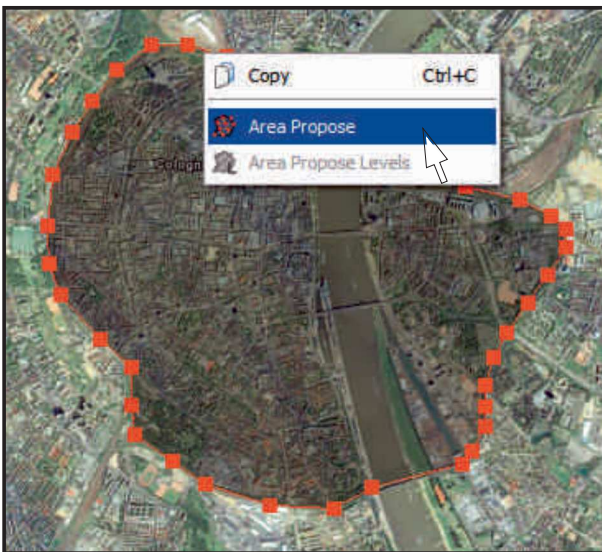
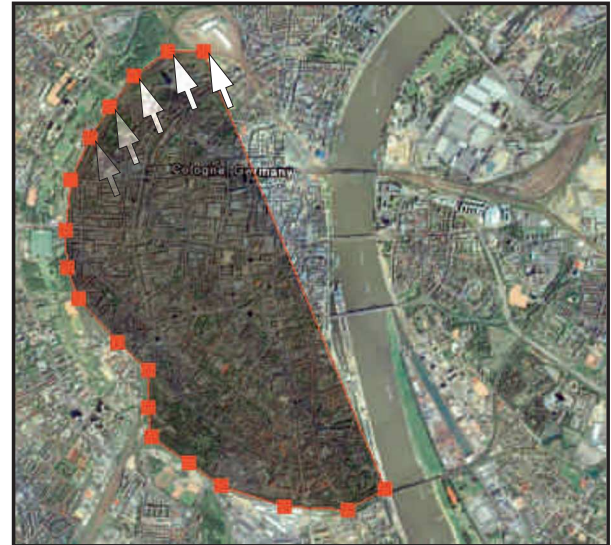


## IGIplan™ - Mission Planning Software

IGIplan is IGI's new planning software. It provides a quick workflow with GoogleEarth™ format support. The user can plan a new project within a few minutes. Simply define an area in GoogleEarth and import the \*.kml file to IGIplan. After setting the basic values, the flight lines are generated automatically by the software. The resulting flight plan can be exported back to GoogleEarth (see reverse side).



Pic. 2: Selecting Area Propose



Pic. 1: Defining an area - Cologne city

### Example - Area Propose:

The Area Propose function allows the user to present the mission plan to his customer in just one minute.

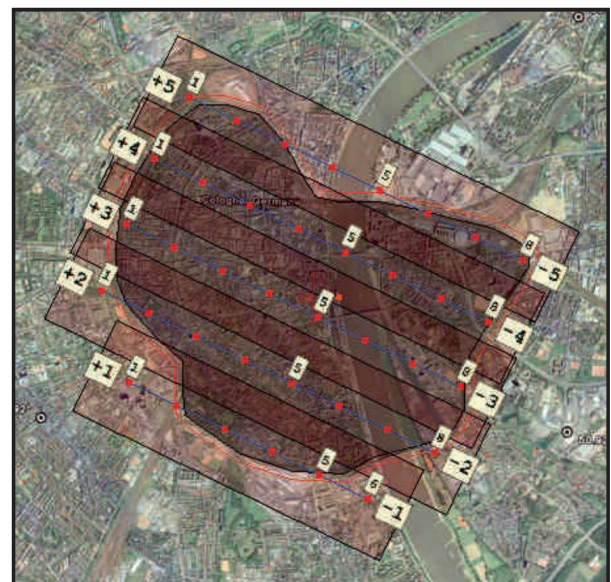
Pic. 1: First, select an area with the mouse.

Pic. 2: When the polygon is defined choose Area Propose from the popup menu.

Pic. 3: The flight lines are calculated automatically and the resulting mission plan is shown.

### Features:

- GoogleEarth (\*.kml) format support
- More than 600 local coordinate systems
- Support for all common aerial cameras and sensors (see chart)
- Raster & vector map support for common file formats
- Support for many DTM raster formats
- Drag and modify flight lines interactively
- Automatic altitude determination through sensor specific mission planning parameters (GSD, picture scale, see chart)
- Planning and creation of flight lines, blocks or tracks with automatic levels using DTM
- Full support for IGI's CCNS4
- 3D view of the flight plan
- Multiple Undo / Redo
- Video tutorials

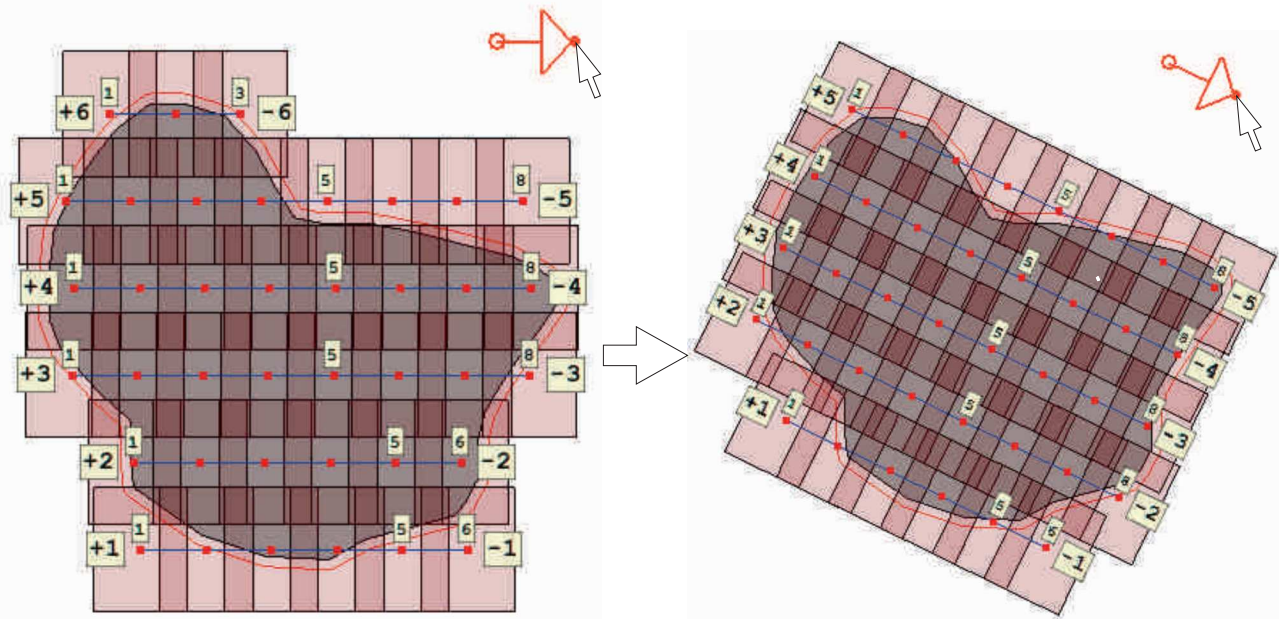


Pic. 3: Automatically generated flightlines

IGIplan SENSOR TYPE SUPPORT		Automatic Altitude Determination & Coverage Simulation when changing:
<b>Analog Cameras</b>	e.g. RC10/20/30, RMK-A/-TOP, LMK,...	picture scale, forward size, sideways size Ground Sample Distance (GSD) and analog camera features dots/sqm and speed, swath GSD, swath
<b>Digital Cameras</b>	e.g. DMC, UltraCam-D/X/Xp, DiMAC, DigiCAM / dual / quattro,...	
<b>LiDAR Scanner</b>	e.g. LiteMapper,...	
<b>Line Scanner</b>	e.g. JAS, 3-DAS-1,...	



# IGIplan™ - Mission Planning Software

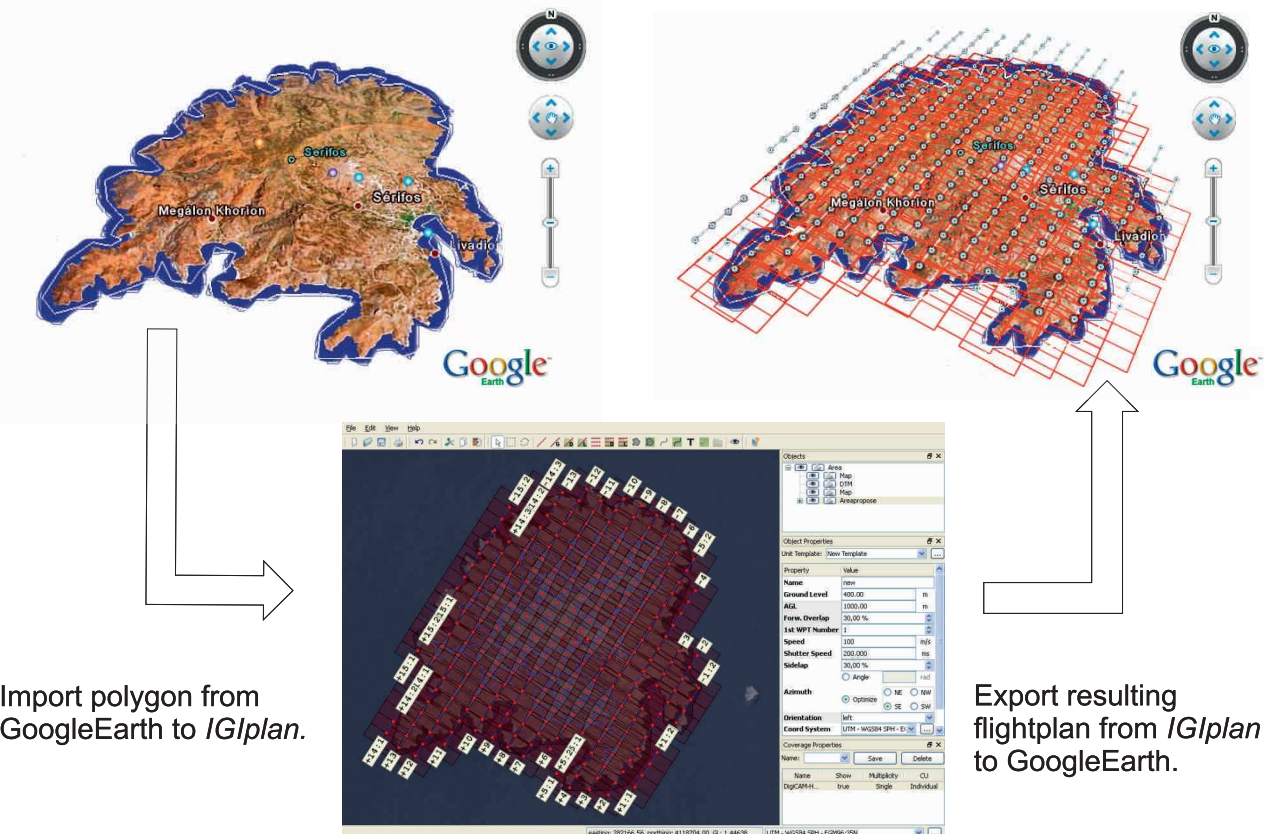


The above screenshots exemplify how the orientation of an area's flight lines can be adjusted by altering their azimuth. With the red arrow it is possible to change the azimuth for all flight lines. *IGIplan* facilitates the creation of alternative flight plans for the user with one mouse move.

## System requirements:

- Intel Pentium®, Core™ or equivalent processor
- Microsoft® Windows XP with Service Pack 2 or 3; Windows Vista® with Service Pack 1
- 512MB of RAM
- 150MB of available hard disk space

## Keyhole Markup Language support:



Import polygon from GoogleEarth to *IGIplan*.

Export resulting flightplan from *IGIplan* to GoogleEarth.

**IGI mbH**  
Langenauer Str. 46  
57223 Kreuztal  
Germany

**P:** +49 (0)2732 5525-0  
**F:** +49 (0)2732 5525-25  
**E:** info@igi-systems.com  
**W:** www.igi-systems.com  
www.litemapper.eu  
www.streetmapper.eu